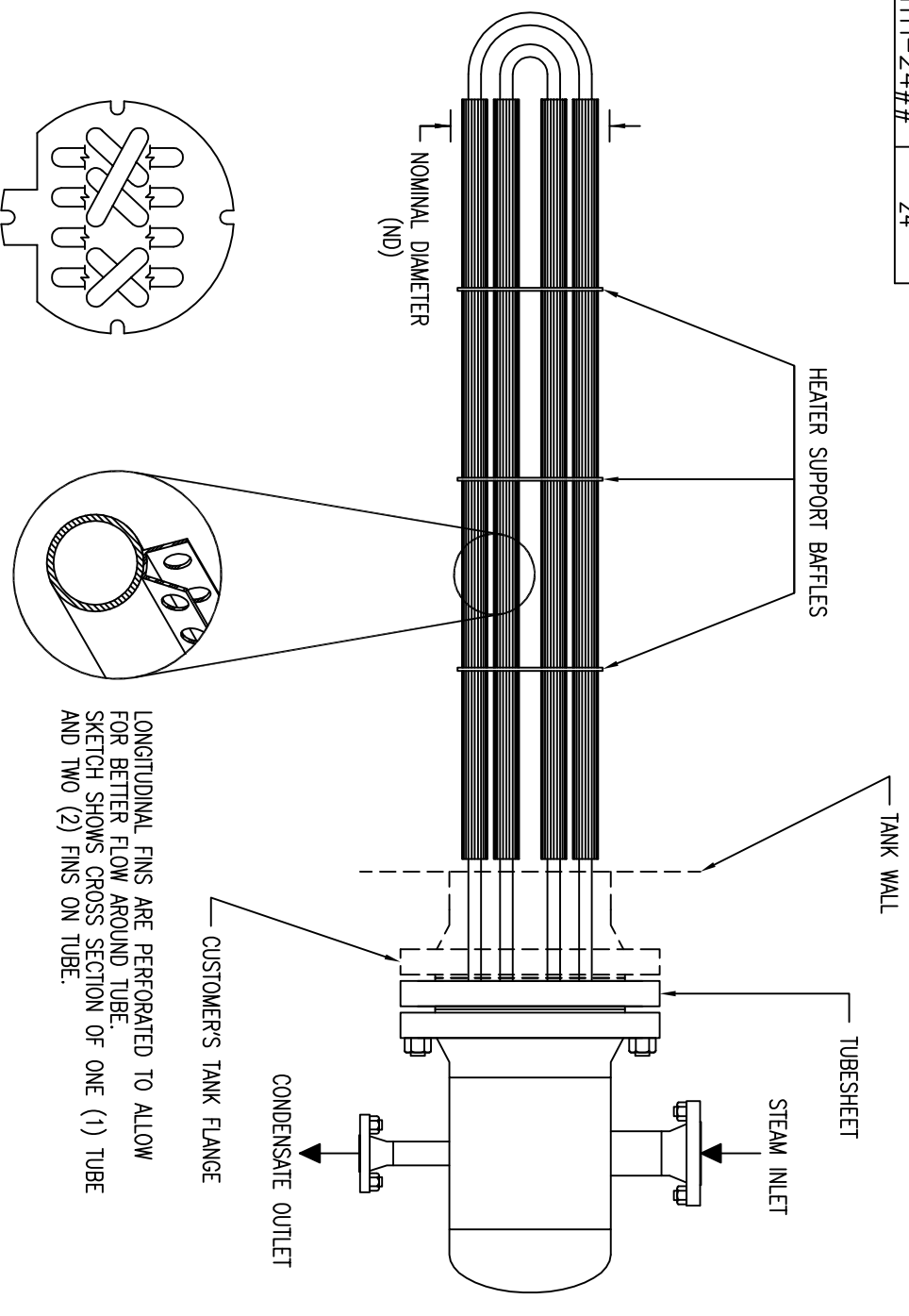


Standard Model	ND (Inches)
MTH-08##	8
MTH-12##	12
MTH-16##	16
MTH-20##	20
MTH-24##	24



LONGITUDINAL FINS ARE PERFORATED TO ALLOW FOR BETTER FLOW AROUND TUBE. SKETCH SHOWS CROSS SECTION OF ONE (1) TUBE AND TWO (2) FINS ON TUBE.

### NOTES

Supports to be provided by others for adequate internal bundle support.

Tubesheet to be designed to mate to Customer's Tank Flange. (API Flange, w/ API Bolt Holes)

Tubesheet bolt holes to be threaded at every other bolt hole to allow removal of channel without uninstalling heater.

Channel flange can be of Raised Face Weld Neck or Raised Face Slip On construction. (NOTE: Price may vary)

Heater dimensions shall be optimized based on customer design conditions.

Heater Nominal Diameter (ND) reflects the nominal outer diameter of the bundle including support baffles. Nominal Diameters shown are not all inclusive, and heaters can be designed to mate to different tank flanges with different nominal diameters.

Tubes may be one-piece or have welded on U-Bends based on design and material availability.