

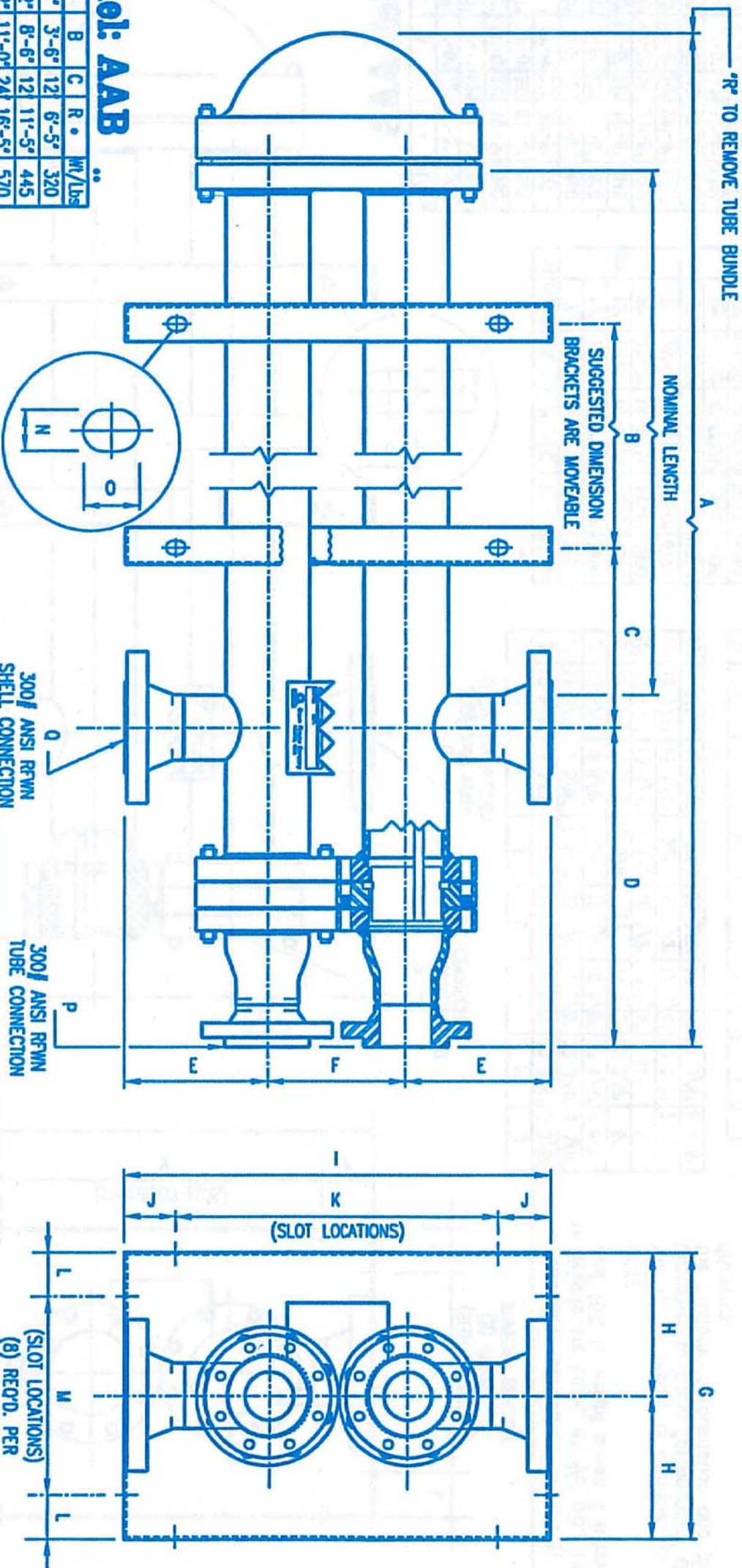


BROWN FINRTUBE
INNOVATORS IN HEAT TRANSFER

12602 FM 529 • HOUSTON, TEXAS, USA 77041 • PH. NO.: (713) 466-3535 • FAX. NO.: (713) 466-3701

LOK-FLANGE® CLOSURE - Multitube Exchanger with Reducer

Quality standards for this more economical design are at the same high level as those used for our critical service equipment. All Brown Fintube heat exchangers are ASME code inspected, stamped, and registered with the National Board of Pressure Vessels.



Model: AAB

Sz	N/Length	A	B	C	R	W/Lbs
5'	7'-2"	3'-6"	12'	6'-5"	320	
10'	12'-2"	8'-6"	12'	11'-5"	445	
15'	17'-2"	11'-0"	24'	16'-5"	570	
20'	22'-2"	14'-0"	36'	21'-5"	695	
25'	27'-2"	19'-6"	36'	26'-5"	820	
5'	7'-5"	3'-6"	12'	6'-8"	481	
10'	12'-5"	8'-6"	12'	11'-8"	671	
15'	17'-5"	11'-0"	24'	16'-8"	866	
20'	22'-5"	14'-0"	36'	21'-8"	1071	
25'	27'-5"	19'-6"	36'	26'-8"	1241	
5'	8'-1"	3'-0"	12'	6'-8"	986	
10'	13'-1"	7'-0"	12'	11'-8"	1371	
15'	18'-1"	10'-6"	24'	16'-8"	1751	
20'	23'-1"	13'-6"	36'	21'-8"	2136	
25'	28'-1"	19'-6"	36'	26'-8"	2521	
5'	8'-6"	2'-6"	12'	6'-6"	1568	
10'	13'-6"	6'-6"	24'	11'-6"	2198	
15'	18'-6"	10'-0"	24'	16'-6"	2833	
20'	23'-6"	13'-0"	36'	21'-6"	3463	
25'	28'-6"	19'-0"	36'	26'-6"	4098	

Sz	N/Length	A	B	C	R	W/Lbs
5'	9'-5"	2'-6"	12'	8'-0"	3000	
10'	14'-5"	6'-6"	24'	13'-0"	6965	
15'	19'-5"	10'-0"	24'	18'-0"	4940	
20'	24'-5"	14'-0"	36'	23'-0"	5910	
25'	29'-5"	18'-0"	36'	28'-0"	6880	
5'	9'-9"	2'-6"	12'	8'-5"	3740	
10'	14'-9"	6'-6"	24'	13'-5"	5055	
15'	19'-9"	10'-0"	24'	18'-5"	6360	
20'	24'-9"	14'-0"	36'	23'-5"	7700	
25'	29'-9"	18'-0"	36'	28'-5"	9025	
5'	11'-2"	2'-6"	12'	9'-3"	5983	
10'	16'-2"	6'-6"	24'	14'-3"	8063	
15'	21'-2"	10'-0"	24'	19'-3"	10043	
20'	26'-2"	14'-0"	36'	24'-3"	12018	
25'	31'-2"	18'-0"	36'	29'-3"	13998	

Sz	D	E	F	G	H	I	J
3"	16 13/16"	6 5/8"	6"	13 1/4"	6 5/8"	19 1/4"	3 3/8"
4"	18 1/2"	7 5/8"	7 1/2"	15 1/4"	7 5/8"	22 3/4"	3 3/8"
6"	22 3/16"	9 5/8"	12"	19 1/4"	9 5/8"	31 1/4"	4 5/8"
8"	24 9/16"	11 1/2"	13 3/8"	23"	11 1/2"	36 3/8"	6"
10"	28"	13 1/4"	17 1/2"	26 1/2"	13 1/4"	44"	5"
12"	31"	15 1/4"	20"	30 1/2"	15 1/4"	50 1/2"	7 1/4"
16"	41 1/4"	17 7/8"	26"	35 3/4"	17 7/8"	61 3/4"	6 7/8"

* Dimension rounded up to nearest inch
** Weights are based on 3/4" dia., 14 gage tubes. Add 10% to weight shown if tubes are finned

NOTE:
This quote sketch is furnished to allow the Customer to begin "preliminary" design on the Customer's foundation and piping drawings.

Weights shown are approximate w/o turbulators, wire wrapped cores, etc.

The information furnished herein is for a STANDARD unit. If your particular order is a custom design, use this bulletin for "approximate dimensions" until a certified drawing is furnished.

THE INFORMATION CONTAINED WITHIN THIS DOCUMENT IS PROPRIETARY AND CONFIDENTIAL AND SHALL NOT BE PROVIDED TO, OR DISCUSSED WITH OTHERS, WITHOUT THE EXPRESS WRITTEN APPROVAL OF KOCH HEAT TRANSFER COMPANY, LP AND/OR ITS AFFILIATES