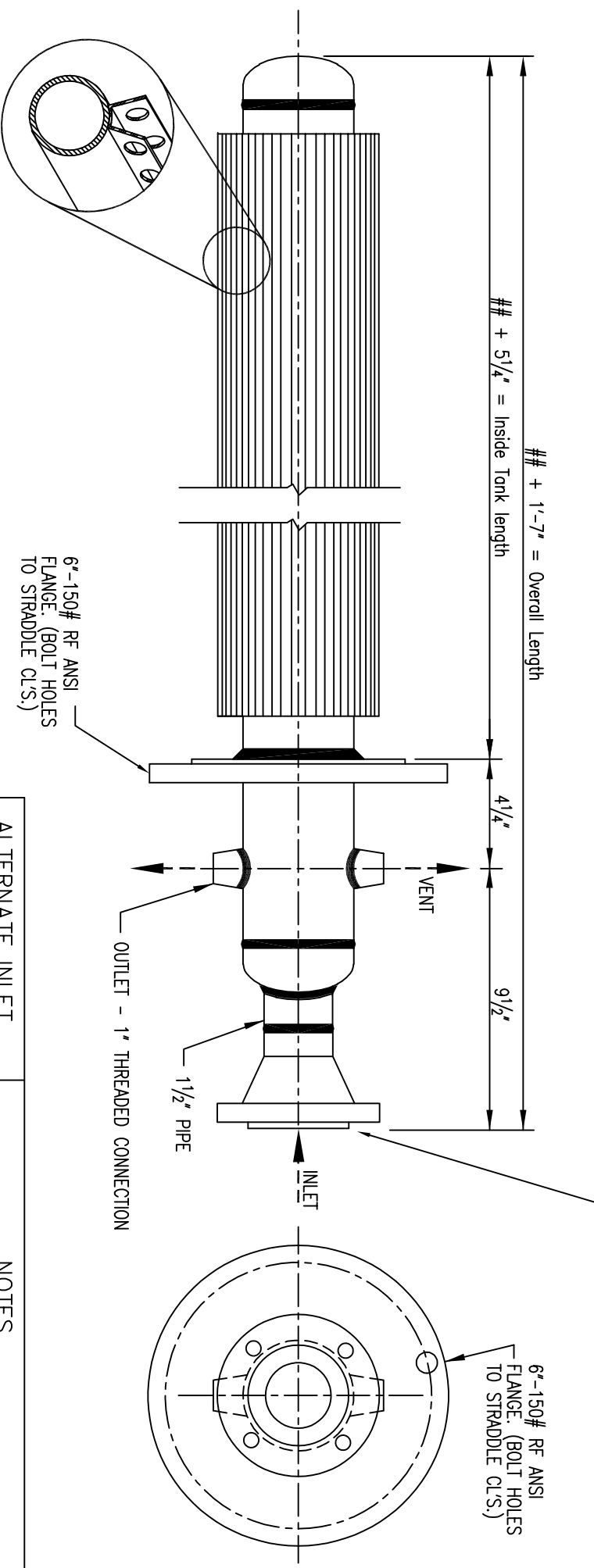


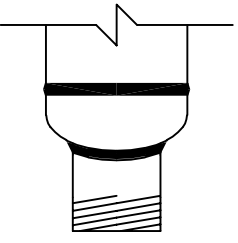
Standard Model	Surface Area	Weight	Overall Length
BTH-3-5	44 ft ²	140 lbs.	6 ft. 7 in.
BTH-3-10	89 ft ²	235 lbs.	11 ft. 7 in.
BTH-3-20	177 ft ²	415 lbs.	21 ft. 7 in.
BTH-3-30	266 ft ²	595 lbs.	31 ft. 7 in.



DESIGN CONDITIONS
(KHT Standard Designs)

Design Pressure	535 PSIG
Hydro Test Pressure (Shop)	695 PSIG
Metal Temp.	-20/650 °F
Corrosion Allowance:	1/16" (except tubes)

THE INFORMATION CONTAINED WITHIN THIS DOCUMENT IS PROPRIETARY AND CONFIDENTIAL AND SHALL NOT BE PROVIDED TO OR DISCUSSED WITH OTHERS WITHOUT THE EXPRESS WRITTEN APPROVAL OF KOCH HEAT TRANSFER COMPANY, LP AND/OR ITS AFFILIATES.

ALTERNATE INLET	NOTES
 <p>Alternative inlet connection available as a 1 1/2" threaded connection.</p>	<p>Coat threaded surfaces with DEOXY ALUMINATE and protect with plastic pipe caps prior to shipment.</p> <p>Internal supports may be required depending on mating (tank) flange design. Supports to be provided by others, although KHT may provide recommendation for design.</p> <p>Overall Length and other dimensions may vary based on nozzle sizes, connection types selected, or other special conditions</p>