

Standard Model	Surface Area	Displacement	Weight (Dry)	Overall Length
HL-4-12.5	250 ft ²	2.2 ft ³	455 lbs.	13'-8 ³ / ₁₆ "
HL-4-25	500 ft ²	4.15 ft ³	830 lbs.	26'-2 ¹ / ₄ "

NOTES

TANK HEATER WILL FIT THROUGH MANWAY WITH MINIMUM INSIDE DIAMETER OF 19"

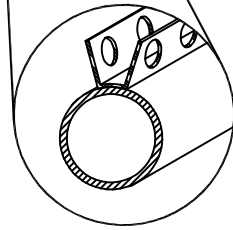
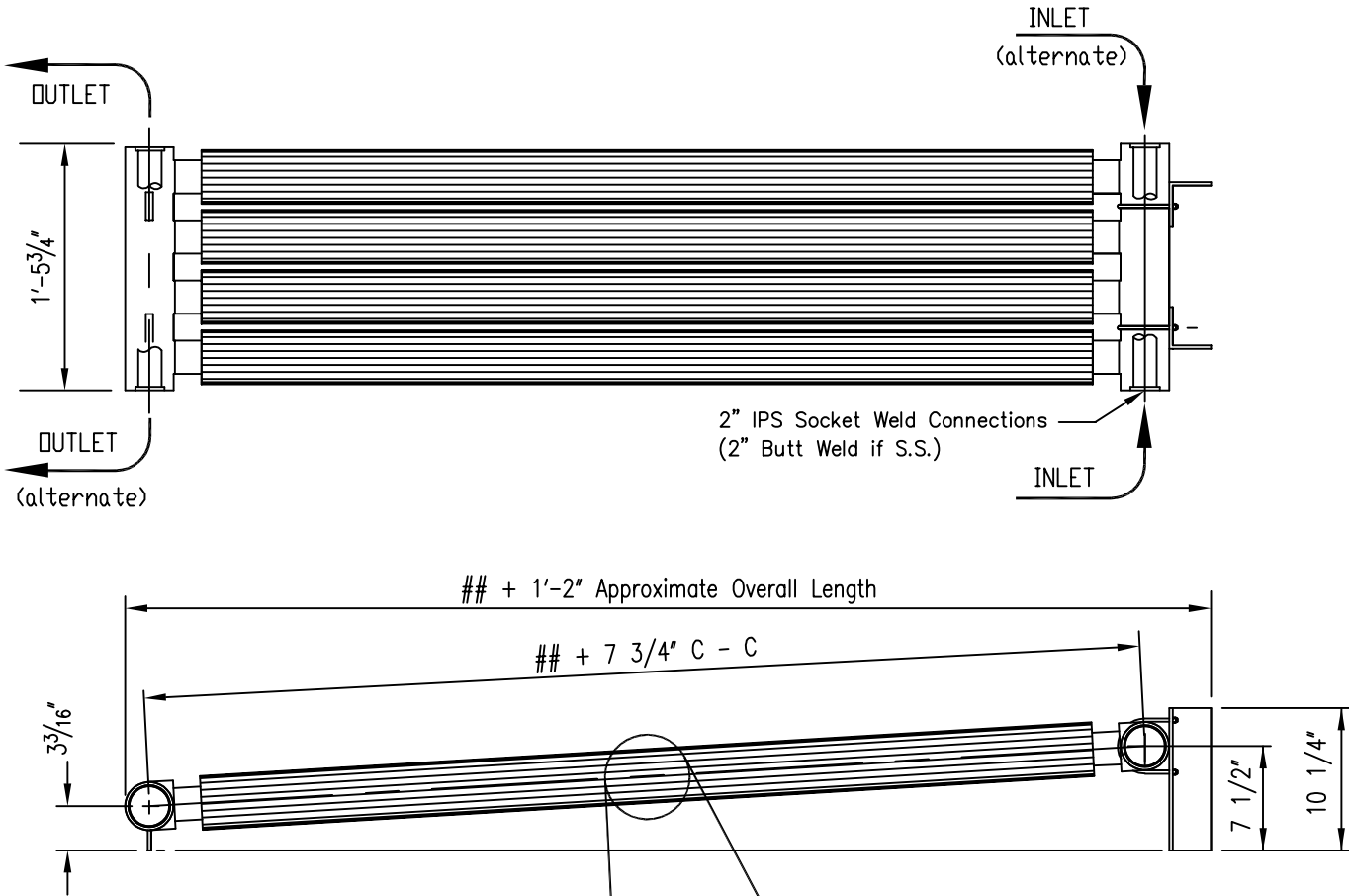
HEADER OPENINGS OPPOSITE END FROM PIPING CONNECTION ARE TO BE CLOSED OFF WITH 2" PIPE CAP WELDED IN PLACE BY OTHERS IN THE FIELD. PIPE CAPS ARE NOT INCLUDED.

SOCKET/BUTT WELD SURFACES WILL BE COATED WITH DEOXY ALUMINATE AND PROTECTED WITH PLASTIC PIPE CAPS PRIOR TO SHIPMENT

DESIGN CONDITIONS WILL BE PER DATASHEET

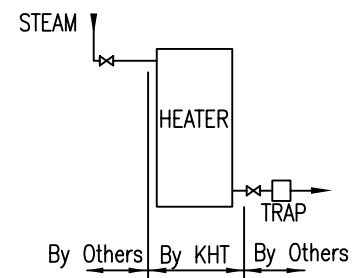
SUPPORTS CAN BE MODIFIED TO MEET SPECIAL CONDITIONS

TANK HEATER IS DESIGNED PER ASME BPVC SECTION VIII DIVISION I. UNIT MAY BE CODE STAMPED IF REQUIRED.



LONGITUDINAL FINS ARE PERFORATED TO ALLOW FOR BETTER FLOW AROUND TUBE. SKETCH SHOWS CROSS SECTION OF ONE (1) TUBE AND TWO (2) FINS ON TUBE.

SUGGESTED PIPING INSTALLATION



DESIGN CONDITIONS (KHT Standard Designs)	
Design Pressure	650 PSIG
Hydro Test Pressure (Shop)	845 PSIG
Metal Temp.	-20/650 °F
Corrosion Allowance:	1/16" (except fins)

THE INFORMATION CONTAINED WITHIN THIS DOCUMENT IS PROPRIETARY AND CONFIDENTIAL AND SHALL NOT BE PROVIDED TO OR DISCUSSED WITH OTHERS WITHOUT THE EXPRESS WRITTEN APPROVAL OF KOCH HEAT TRANSFER COMPANY, LP AND/OR ITS AFFILIATES.